

MONTHLY MEMBERSHIP PROGRESS REPORT

LOCATION PENNSYLVANIA

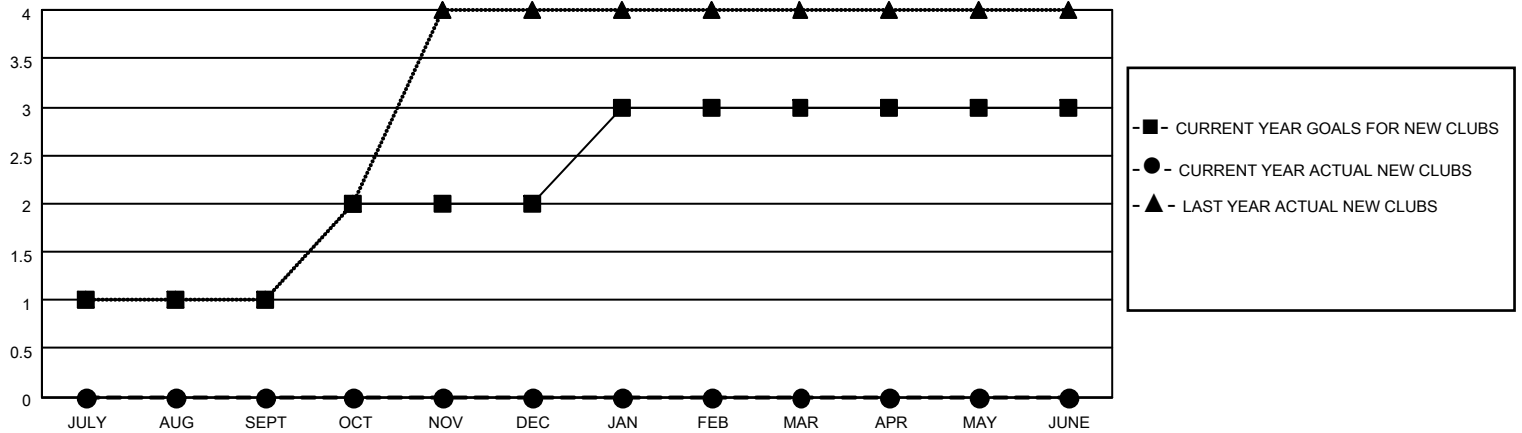
District 14 A

Results as of: 10/31/2021

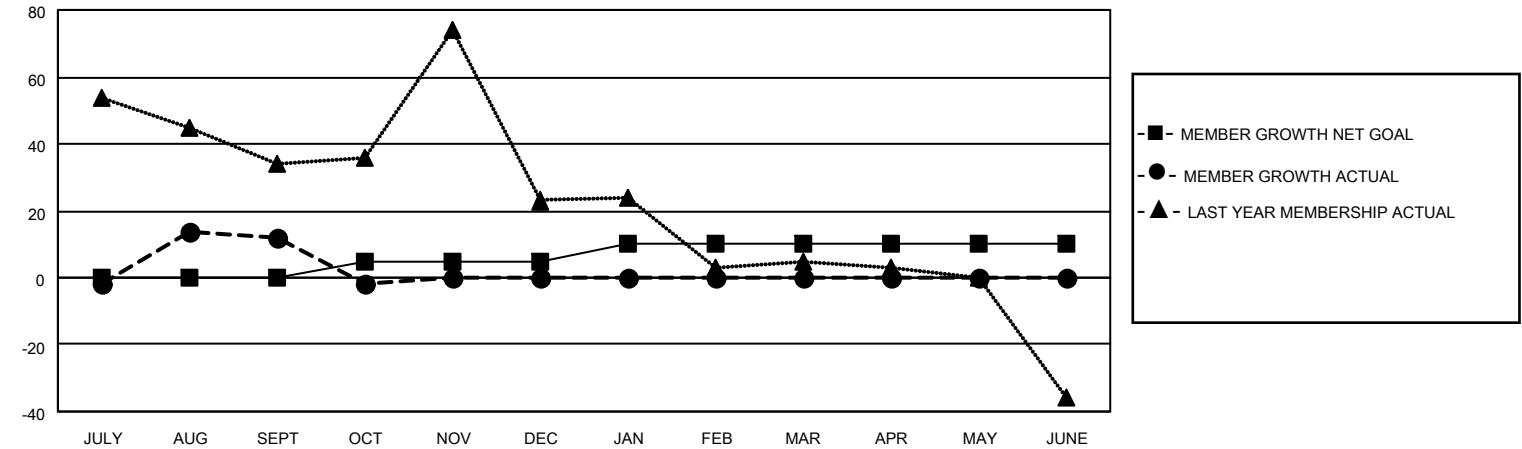
Clubs			
RESULTS FOR 2021-2022			
QUARTER	NEW CLUB GOAL	NEW CLUBS	DROPPED CLUBS
JULY/AUG/SEPT	1	0	2
OCT/NOV/DEC	1	0	0
JAN/FEB/MAR	1	0	0
APR/MAY/JUNE	0	0	0

Members			
RESULTS FOR 2021-2022			
QUARTER	MEMBER GROWTH NET GOAL	MEMBER GROWTH ACTUAL	DROPPED MEMBERS ACTUAL (including transfers)
JULY/AUG/SEPT	0	53	37
OCT/NOV/DEC	5	8	22
JAN/FEB/MAR	5	0	0
APR/MAY/JUNE	0	0	0

GOALS AND ACTUAL NEW CLUBS CUMULATIVE



GOALS AND ACTUAL MEMBERS CUMULATIVE



DROPPED CLUBS: 2	
DROPPED MEMBERS	
DECEASED	4
CLUB CANCELLED	23
OTHER	32
TOTAL	59

13 CLUBS OF 63 ADDED 1 OR MORE NEW MEMBERS

[CLICK HERE FOR CUMULATIVE MEMBERSHIP DATA](#)

<u>GENDER DISTRIBUTION</u>	
MALE	935 (64.44%)
FEMALE	516 (35.56%)
NON BINARY	0 (0.00%)
PREFER NOT TO ANSWER	0 (0.00%)
TOTAL FAMILY UNIT MEMBERS	228
FAMILY MEMBERS PAYING HALF DUES	119